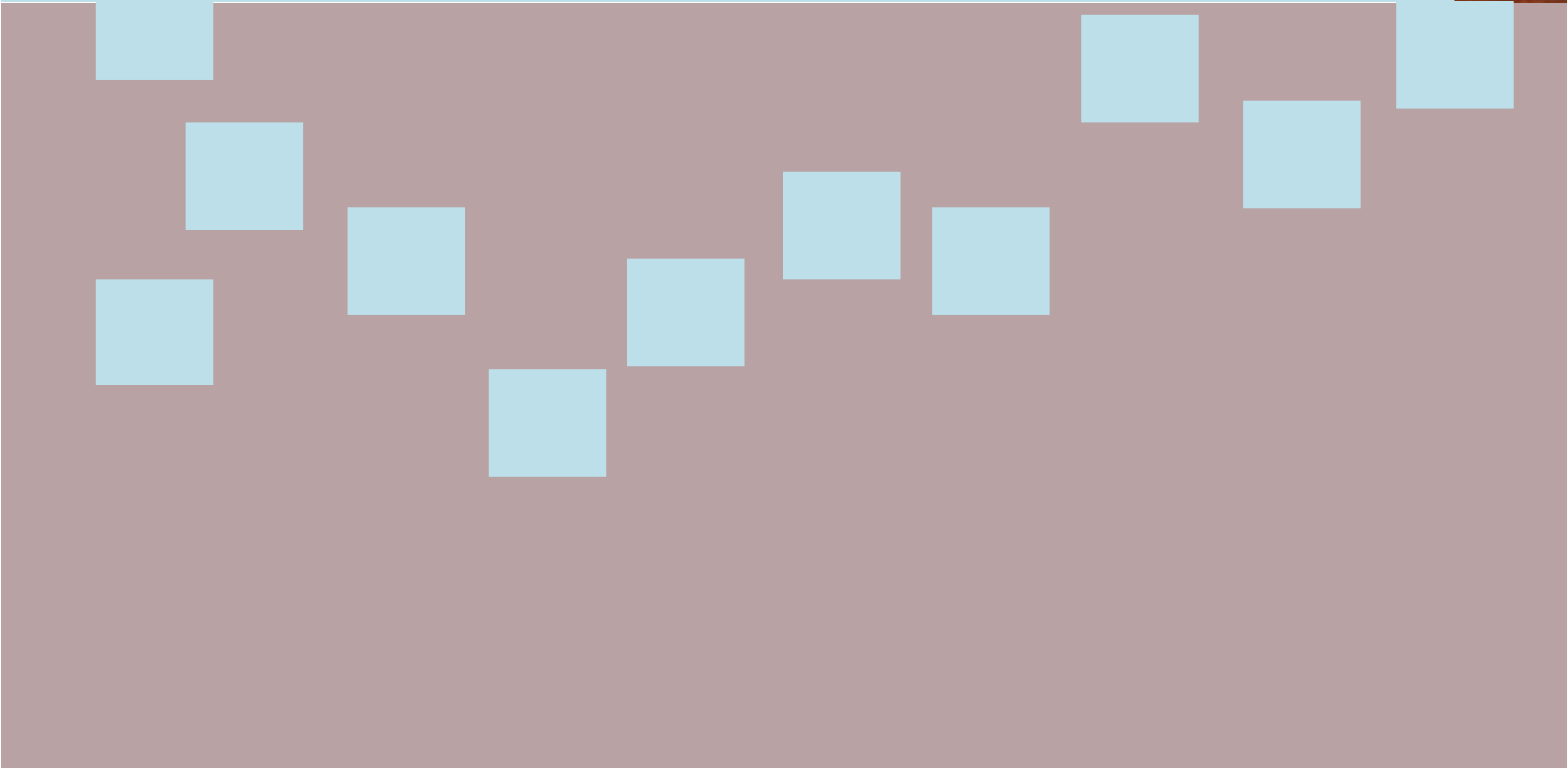


Tiny House Revolution

The Revolution of Re-Arrange

Jennice Lee

s3594296



CONTENT

Abstract	3	Chapter 3: Making Interior	49
Introduction	4	3.1 Space Cubes	50
Client Brief	5	3.2 Activate the Space	53
Site Analysis	10	3.3 Make & Fold	57
Exploration		3.4 In Between	63
Chapter 1: Tranformation	14	3.5 Folding Interior	66
1.1 Hiding	15	Chapter 4: Re-Arrange	69
1.2 Modular Stacking	18	4.1 Design Process	70
1.3 Unfold Space	21	4.2 Research Proposal	75
Chapter 2: Stacking	24	Bibliography	86
2.1 Furniture Stacking	25		
2.2 Analysis	32		
2.3 Pack & Unpacking	36		
2.4 Functional Mobility	42		

ABSTRACT

Nowadays, as the economics of Melbourne rises quickly, the population density increased rapidly in city. However, city has no more space to develop a new living space for new comer. Thus, people start to utilize unused space and downsizing space structure. In order to live in such tiny space, people could transform the interior to be more adaptable and fully utilize the space. In social development context, this research proposal anticipates connection between space and family through transformation. This idea also means that multiple groups of residents could be connected and live in a space together by simply transitioning the interior.

A living space is a site where people spend most time with family, it is important to connect each other through the fluidity of space by manipulating space and function of interior. By arranging the daily objects, an interior could be more creatively formed, combined, engaged, also opened up more possibilities. Thus, I think the key idea is to design a space for people to go through 'making' and 'activating' interior.

This leads to my research question: "How can transformative techniques affects the interior structure of living space?"

I am interested in exploring different ways of techniques to change the structure of a space, such as through a series of technique based on idea of repetition. Techniques I have engaged in are unpacking, stacking, and folding to create different forms of space. The process is documented to view on the change.

Through this research, an interior space could be something more than what people see. Everything in the interior could be manipulated through the process of creating space and transformation of arrangement. Through the arrangement, any object is allowed to be placed at another position in another gesture, as the space function by how it is structured but not the value or materiality of the object itself

INTRODUCTION

This research proposal is called Re-Arrange. In order to live in a tiny space, the residents have to rearrange the interior so that to form a multifunctional living environment. By rearranging interior, the residents are able to experience various types of techniques to transform the living area. Through this proposal, I intend to design an interior make by residents themselves, which means residents have to move the interior object to another position. In order to achieve the intend function of space, any object could be placed at anywhere as long as the space is comfortable to be used.

This research proposal is designed for two families of residents also questions how multiple families live together as a community setting in a small alley in Melbourne city. So as to make the residents and the space stay connected, the space is designed as a relatively opened sense of inhabitation. For example, as wall always seem as a dividing element, thus the utilization is relatively low, so the idea of using separate floor plates layers is proposed to expand the availability of space. The openness reveals the unique relationship with adjacent space without breaking the continuity of interiority.

In addition, the site is located outlandishly throughout a narrow laneway. Socially, the interior space is not isolated but connected to the surrounding. The design of tiny space between two buildings is to help residents to adapt to the current environment. As it is fully fused in to the surrounding, the residents, the interior and the pedestrian are connected together in the extraordinary moment of pedestrian pass by the laneway. Through the process of my past exploration, I envision this creation of new spatiality could open the interactive entity comes along with various function transformations.

This research proposal is designing for two families of residents. However, it is focus on the requirement of one family and reflect the general needs onto the design aspect. The family members are made up of a dad (John), a mom (Kate), and a son (Jeffrey). Three of them have different issues to be solved in the design but also opens up solution.



CLIENT BRIEF

Daddy (John)

35 years old



John's issue:

1.) Kate will always wake up earlier 20 minutes before me as she love to make up before work. However, it is not enough! She always still using the bathroom when i get up. It makes our morning so rush everyday! I think we need two spaces.

2.) I love to play with my son but sometimes the space is not enough.

3.) I would like to share a workspace with Kate everyday. But I hope the workplace could get bigger when I'm working alone.



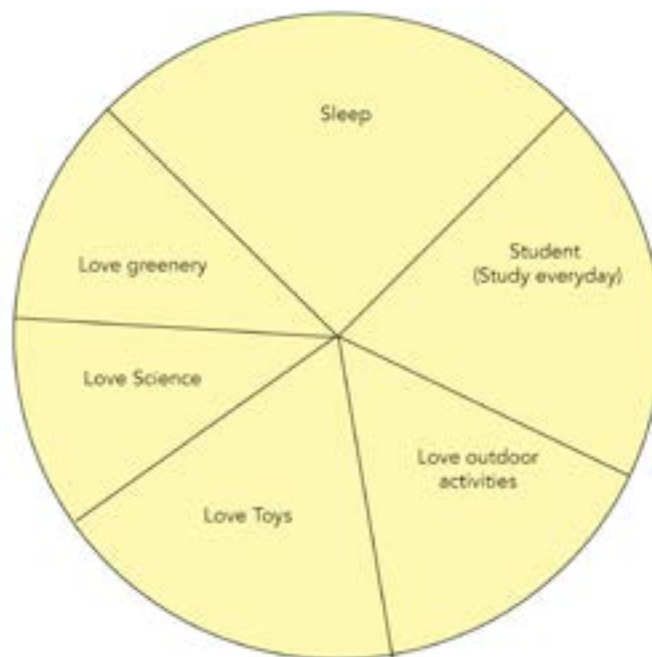
Kate's Issue:

1.) I feel like spending too less time with my son, I hope we have a space to connect us together.

2.) I want to have more space to store my art tools and my art piece. They are messy but looks lovely and i always want to put on it!

Child (Jeffrey)

10 years old

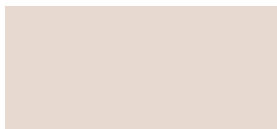


Jeffrey's Issue:

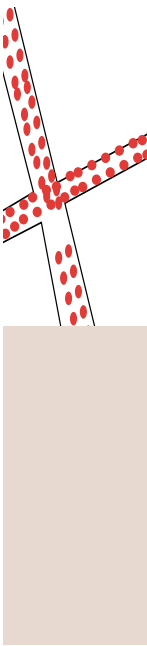
1.) I think I'm very tall! But sometimes I'm still too short to get things up in the cabinet! So I'll always need to get a stool to get higher...

2.) I want more sunlight and grow like a big tree!

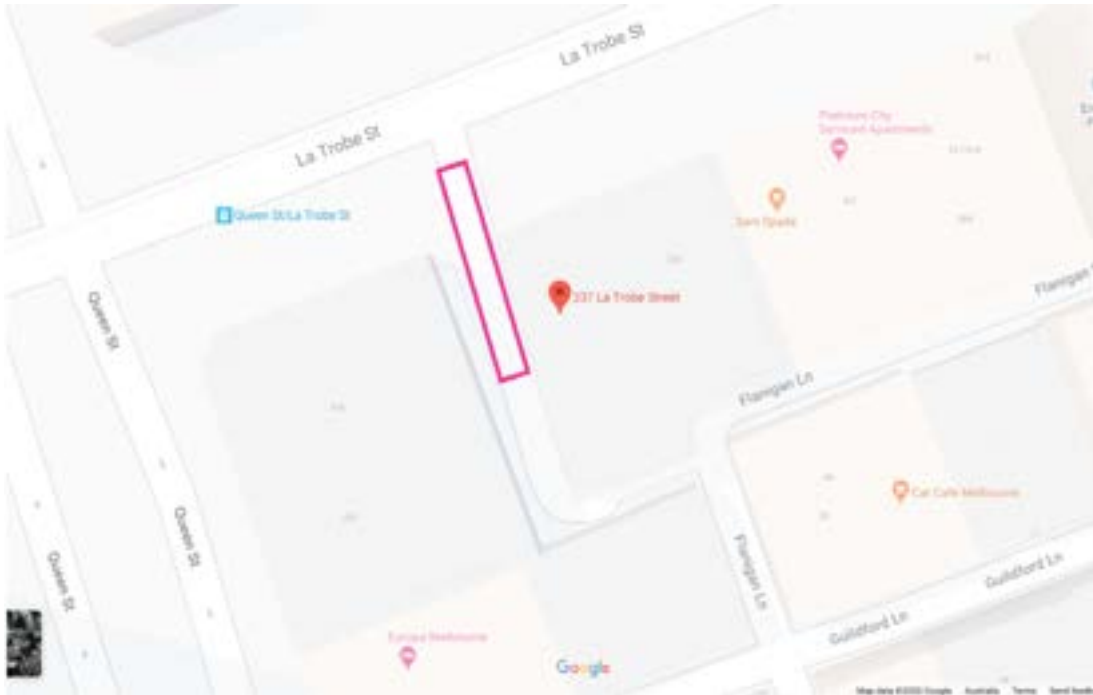
In conclusion, the client brief helps me to focus on the necessity of creating a more intimate space as well as appropriate private space for each family member. I decided to provide a spatially porous interior between spaces in home, so that the family members are able to spend time with each other.



In Melbourne city, there are many alleys haven't been utilized in the new construction and development. For example, there is a small laneway on Latrobe Street which is between a Global Business College and an apartment that is still undergoing construction. The college is a brick building and the apartment is a tall glass building. It is not being utilized and sometimes function as a pathway to access to another street.



SITE ANALYSIS



La Trobe Street

A small space between a Melbourne business college and an (apartment?) to be rent out. This small space is not being used few years ago and now it is used to park the truck during construction.

Image A : 2016 (building haven't been demolished)

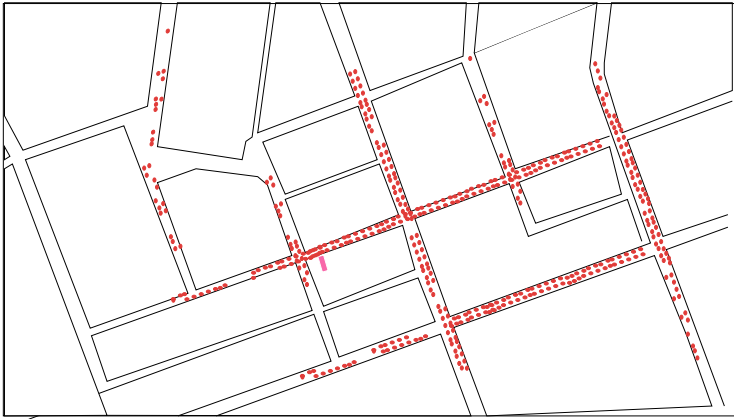
Image B : captured recently which is undergoing construction.



A



B



Community Flow



Wind Direction



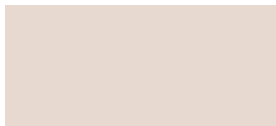
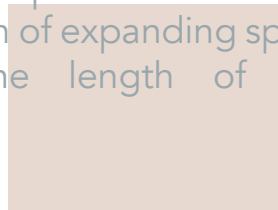
Public Transport Accessibility



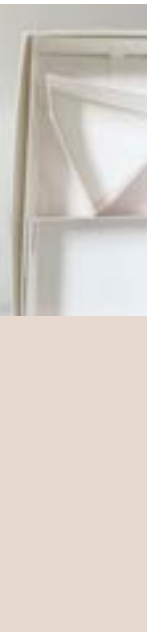
Pedestrian Accessibility

Facing Latrobe Street, it is a busy laneway. Pedestrian always pass, stop and waiting for tram. Thus, the community flow is highly circulated, and all surrounding streets are full of people all the time. People and transportation never stop is not only because of the location, also it is a place that near to many universities. People always tend to find a dwelling near to the location, but it is hard to find a space to construct and live. Thus, the small laneway between two existing buildings become very potential and valuable in the future development.

This forms a narrow environment which causes the following explorations are more focus on the transformation of expanding spatial functionality to utilize the length of whole laneway.



Transformation is addressed as the main design idea of the proposal. It makes the space become unexpected and full of playful element. Activating a transformative space needs the residents to live as well as create. Thus, this chapter explores the transformative technique of hiding and stacking,



TRANSFORMATION

1.1 HIDING



In order to explore how could different shapes and forms could incorporate and create a new spatiality, I began looking at 'shifting' as a way to imply the idea. This process helps me to think how object situates in a relatively small space. If the big empty space in the box are function as containers, they are undoubtedly able to contain smaller models. In such, these models function and looks differently in various container. For example, the rectangular form could be fit in nicely into the container, but it moves freely in the bigger triangular shape. The interconnection of different shapes within each other, the enfold and enfolded, create various group of forms and make the shifting as a way of transformative storage system.





By shifting them, I also have considered the 'hiding' and 'stacking' technique in this storage making. By using hiding technique, a cabinet could be fully utilized with no wastage of space. In addition, it also could be hide into a wall by performing as other function. For example, this technique could be used in creation of a stair. When the stair is not used, it can be pushed into the wall. Inversely, when residents hope to use that, they pull it out from wall. This could save the tiny space and increase the utilization of every corner.





The form of lying down, standing, push in and pull out, makes the hiding works differently. It makes me continue on the hiding plus stacking on another type of form. The next exploration unites all the shapes into cube forms and play with the design in the body of cubes.



1.2 MODULAR STACKING



'Making' of interior helps people build their space by themselves.

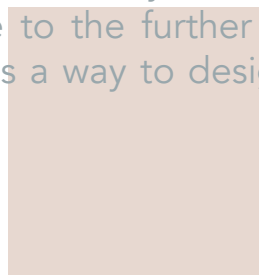
The exploration of modular stacking establish the aim of performing the function of hiding and stacking through singular element which is cube. It requires user to turn the position and direction of cubes manually to achieve the effect of hiding. Thus, the interactive process requires residents to be active in 'making' the space. 'Making' of interior helps people build their space by themselves. It is a way to activate a tiny space. By modifying the arrangement of cubes, it brings out various functions such as a storage system which situates in a space.





Furthermore, it could be a storage system at the bedside table, with stacking straight up one by one; It could also be a storage in interior with function of bookshelves, dressing table, closet in middle, kitchen on the right; It could also be an architecture with one block of walls in between of two blocks of residence. With putting one on top uncover, it makes the other one different from each other, so the object to be placed on top should be careful considerate.

In the end of modular stacking process, I found that the storage system could be very transformative and playful. Singular element could be very playful and flexible when it is activated by different interaction. It leads me to the further exploration of unfolding as a way to design the interior.

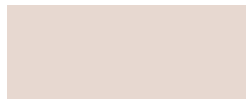
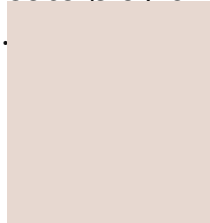


1.3 UNFOLD SPACE

Unfold is a term meaning an object unfold and turn into a bigger, wider area or multi-functional state. From the "Movement of Tiny House", I found that unfolding is a useful tool to design a spacious interior. For instance, the initial idea of the exploration is to imagine a house with 4 rooms could be unfold like a box when the rooms are going to be used. The rooms could be unfolded and be used at daytime, whilst be kept or folded in during night. This idea leads me to think of creating a furniture with a multifunctional purpose to optimize the utilization of space. For example, the idea of unfolding is good to be used in designing a cabinet turning to a chair. This exploration makes me starts to focus on the design on 'multitask' of furniture itself. It inspires me to design a multitask daily object, which is possibly a 'moveable' closet that could transform into a chair. I think it could be used as a transformative technique which perhaps turns a modular chairs set into an easy storing system.



In conclusion, the transformative techniques could help the furniture to be hidden and so achieve the function of multitask on daily object. The transformation could spare more space and create playfully ideal room for residents.



This chapter proposed about the technique of stacking. My notion of furniture staking is inspired by the 'Takadanobaba' of Healy and Claire. Furniture stacking express every object into a space, turning the interior into an accumulation of data of the room. The process of stacking intrigues a lot of questions such as the how the materiality of object affects the stacking, effect of how different object orders. The stacking experiment concerns more on the elements of interior object itself, thus it helps investigating the frequency and necessity of object to be used in an inhabitation.

These explorations are taken at my apartment which mainly sited at kitchen, bedroom and reading room. These experiments take me as the experimental resident and analyze my space usage as the example of how one inhabit in a tiny space.



STACKING

2.1 FURNITURE STACKING

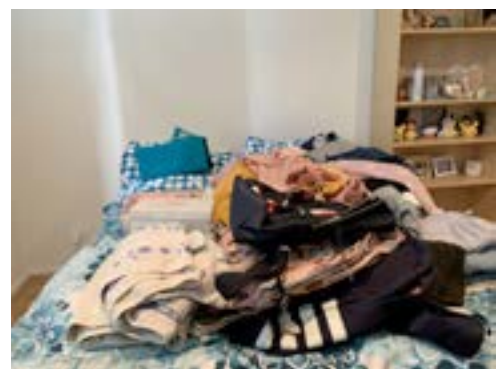
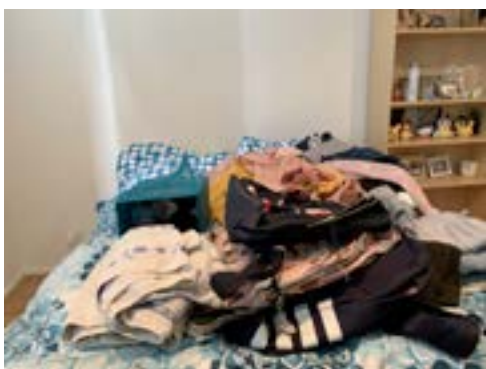
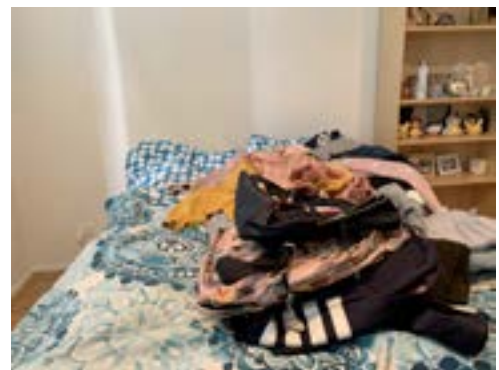
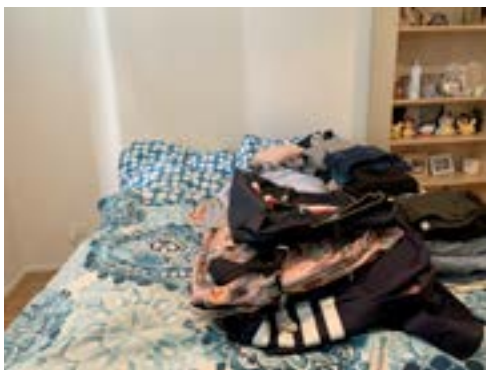
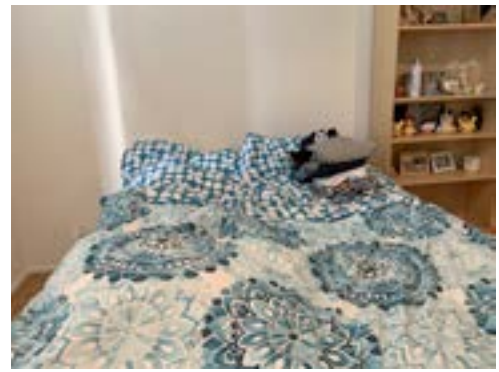
In the context of living area, stacking is a process to organize living objects in designed order. Stacking furniture subjects to the scale and material of the object used in space. By orchestrating different materials together, the features of each object impact how the objects placed. For instance, I have picked some objects from my bedroom, living room and reading room respectively and organize them into a cabinet according to their rooms. For example, bags, towels, make-up kit, pillows, books and watercolours.

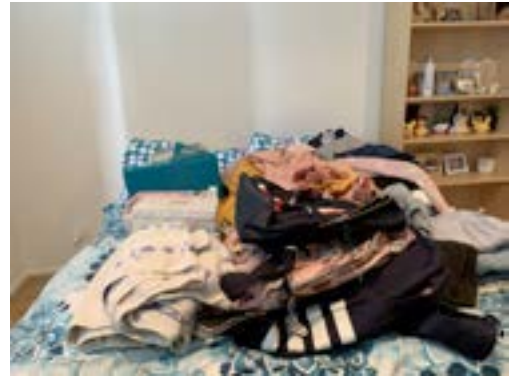
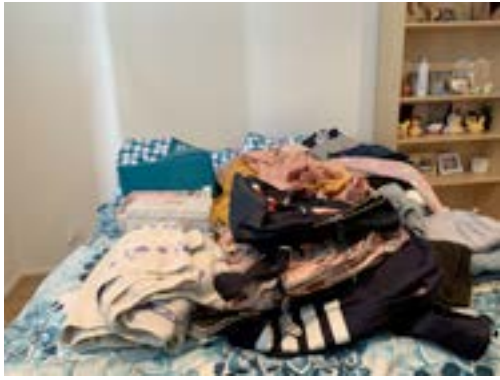






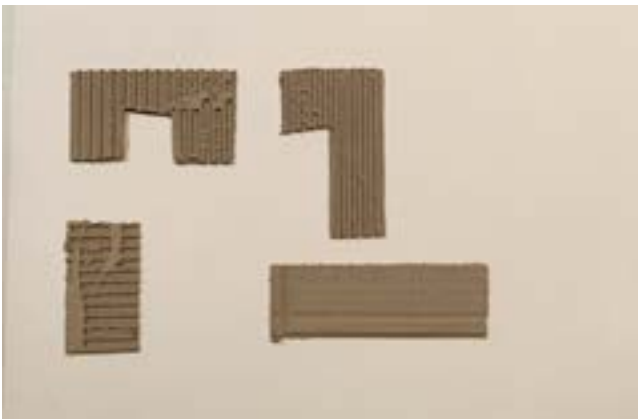
At the moment of picking and arranging them, I consider various factors differently. These include picking the essential living objects and decide the gesture of objects staying there. Should I place towels on top of a bag? What would change if I put them upside down? As the bedroom objects are mainly consisted by soft materials, the stacking explores how could soft materials curated in a designated area. Are they suitable to be squeezed with each other? Are they good to be pressed by other objects on top until it is almost cant be seen? Eventually, the questions of how to organize the personal belongings pops out.



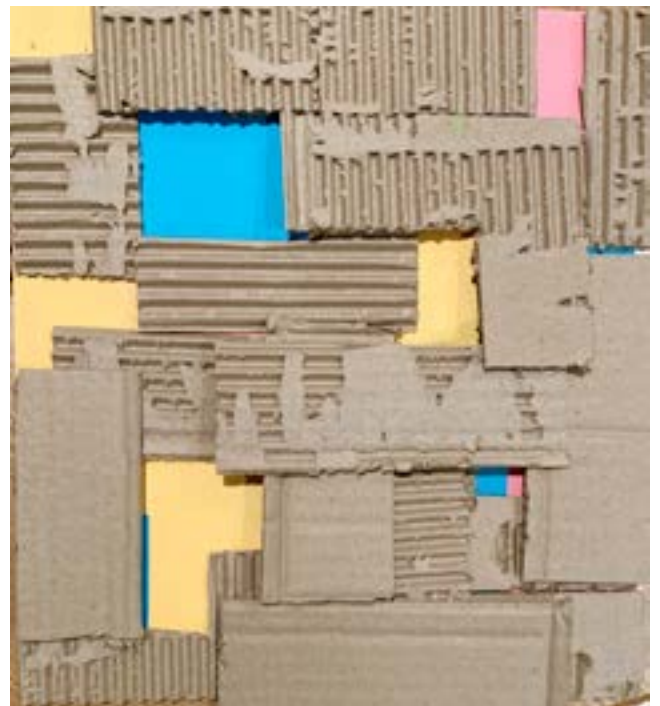
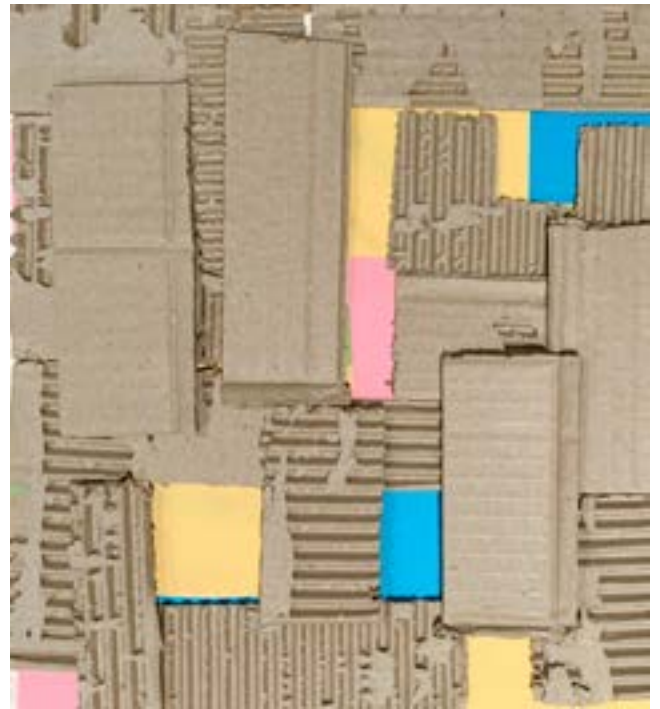


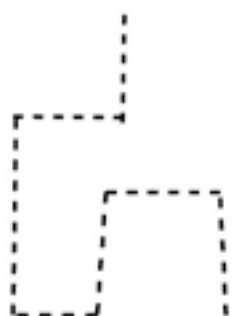
The forms and gesture of objects could definitely be manipulated by the action of stacking and arranging. The gesture between the object and the space forms different spatial qualities.

2.2 ANALYSIS

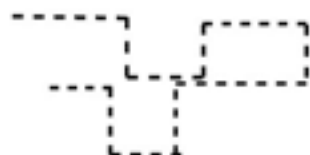


The way of how the objects manipulate space forms different spatial qualities. If the space is a big container, then the objects is the substance that occupy the container. Hence, the way they occupy the space build up incongruent forms. By outlining and forming the objects and space, some abstract forms of space appears in sight. Then, in order to explore various spatial qualities of the substance together, I combine and mix them together. These forms reframe the notion of space and transform into a creative zone with more space possibilities.

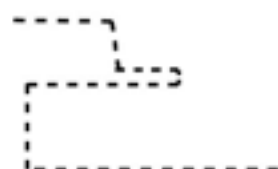




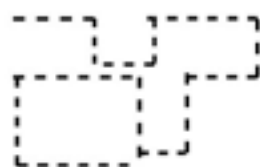
Living Room Objects
Forms



Reading Room Object
Forms



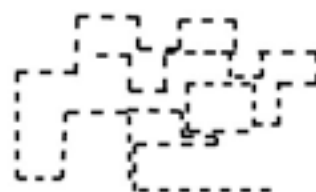
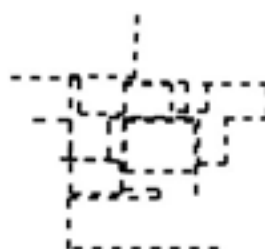
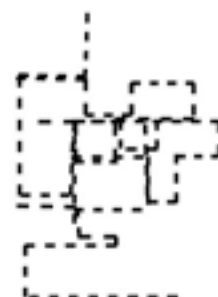
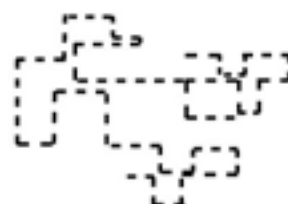
Bedroom Object
Forms



Bedroom Objects
Forms

Rearrangement of the forms

To explore different arrangements and
rearrange these 'space' to see if could make a
new 'space'

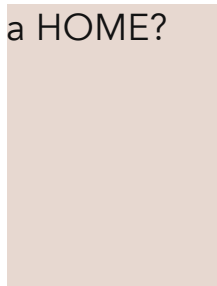


Soft Pillows, Clothes, Cushion, Towels

Hard Boxes, Pencil cases, Make up Kits, Drawing Materials, Books

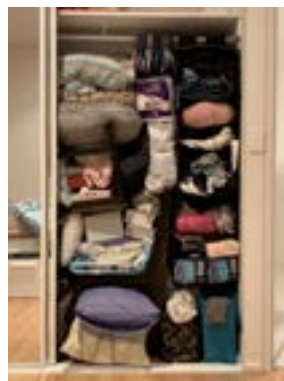
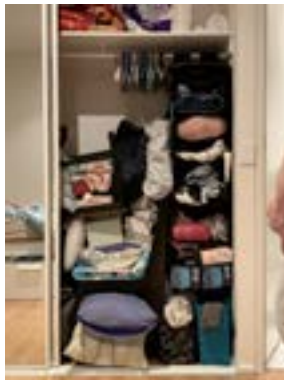
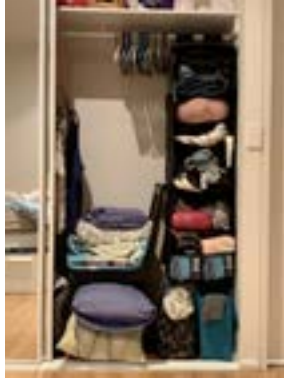
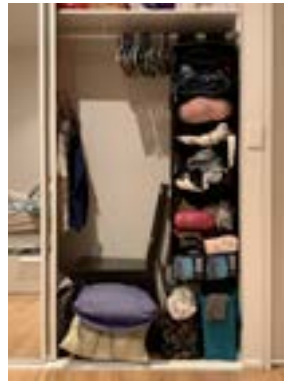
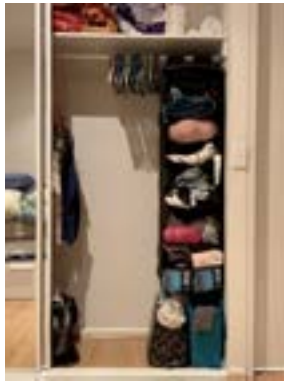
What really occupy space and what is occupied? It is hard to say if space is solidified as well as it could be viewed in colour directly. The 'colour space' offers the possibilities for the substance to move around.

The exploration of the relationship between spatial existence and substance brings me to figure out what function or how do the space function in a HOME?



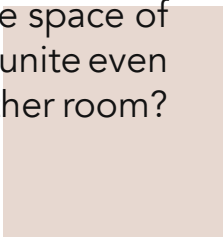
2.3 Pack & Unpacking

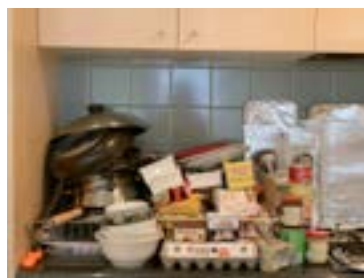
In our living environment, there are various kind of objects accumulate in interior. The accumulation is caused by daily collection and idle. By unpacking the furniture or materials in the designated space such as kitchen and bedroom, the outcome could show the materiality as well as the feature of the space. When those materials are packed in stacked and ordered position, it could activate more possible configuration to be used in space. Nonetheless, the situation of stacking or piling could happen anytime when the space is full of household objects. For example, one can imagines that there is a friend who is going to move out placed some items at this place. While waiting for her to move out her belongings, the items have been packed in a tiny space. These belongings are all compact together in a sequence which brings out questions in the process. The two chairs are placed in an upside down outlandish gestures.



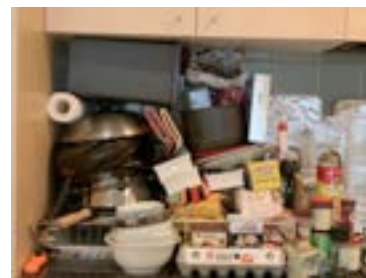
The pillows are inserted in the narrow space between two legs of chairs. The other belongings are then placed one by one to fit in the whole space. During the piling process, I found that some objects are hard to fit in and need some adjustment of how it place and change the sequence to place the object. Through the manner of packing objects, the idea could be applied in interior design, which is the form of object affects how to arrange the interior items and make it adapt according to the dwelling space needs.

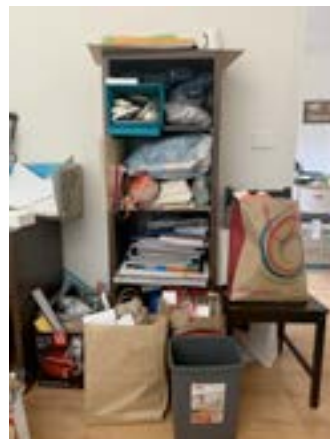
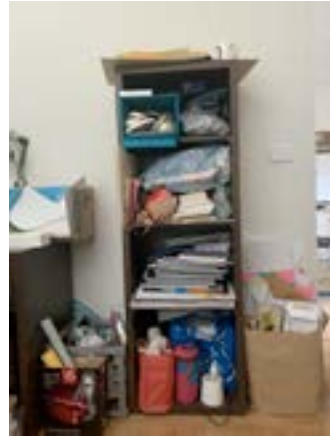
In the process of piling up the kitchen materials, I found that diverse materials brings out different visual experience. For example, shiny stainless steel attracts people's attention and brings people to that point immediately. I start to think what if the material is a wooden made material? What if a stainless steel item is designed in the space of interior? How to make a space to looks unite even it is transformed from a kitchen to another room?



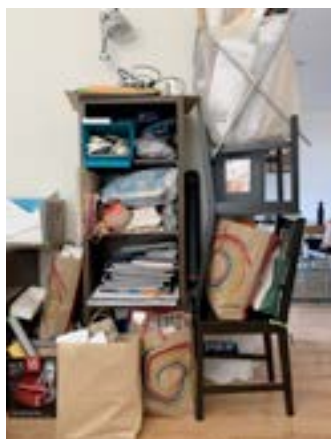


KITCHEN

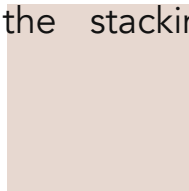




READING ROOM



Nevertheless, the proposal embraces the idea to transform the interior openly which means less vestige of a fixed impression of a function of space. The stacking of objects could be piled in a huge storing cabinet, which performing as other function in other interior setting. In essence, every object could be altered in different space and make impact to the transformation. Stacking is a performance of expressing the daily needs of the space. Linking the idea of transformation, an interior can be transformed into another setting with the stacking techniques.



2.4 Functional Mobility

15m²



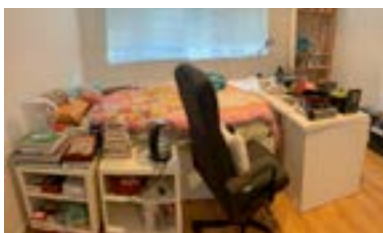
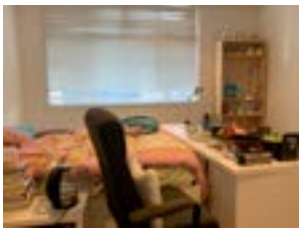
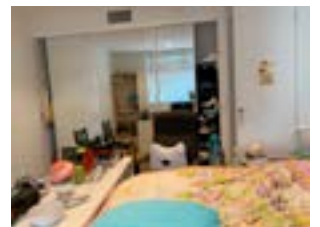
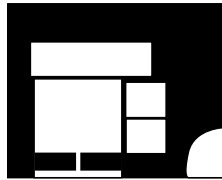
Transformation of a bedroom

Continuing the main idea of rearranging interior, I tried to figure out how to rearrange the layout of space to become a multifunctional interior. A normal living always includes a bedroom, bathroom, living room, reading room / workspace, dining area and kitchen. The aim of the exploration is to investigate how does the space works and how to make them work together in ONE space. Hence, the site of experiment is taken at my bedroom. Referring back to the previous explorations, I have aware of the frequent items to use for specific space. For example, kitchen undoubtedly needs ricecooker and dining utensils. So, the intention is to merge the functions of bedroom, dining area, kitchen and reading room into one.



Bedroom + Dining

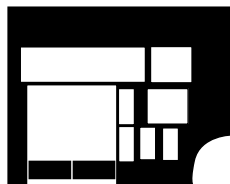
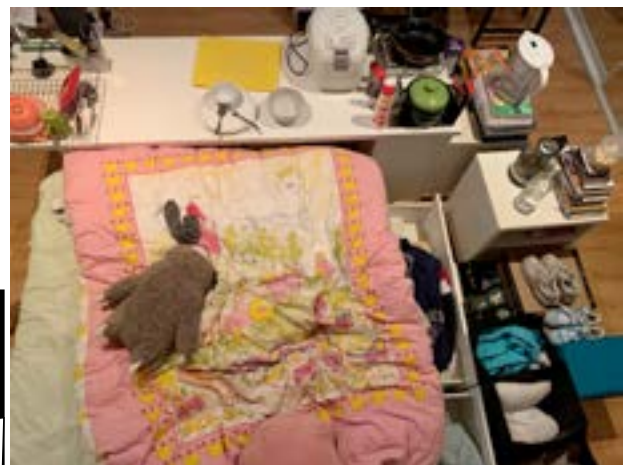
15m²



By starting the exploration, I plan to turn my bedroom into another configuration which is more suitable for merging dining function. I moved the working table to the side of bed, so it could be the dining set with the bed. Bed is then not only function as a sleeping and resting item, but also a seat. Next, I started to place the kitchen items at surrounding. For instance, I placed the bedside cabinet at the side of bed so it could be the table for kitchen appliances to put on. The appliances include ricecooker, frying pan, gas, knife, bowl tray, dining utensils, water and containers. The layout changes where the table set surround the bed and undoubtedly eases the activity of dining to be carried on. The combination of table and bed set inspires me on the idea of the multitask of bed and table chairs.



Bedroom + Dining + Closet

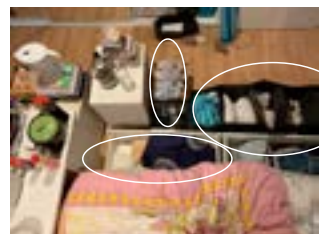
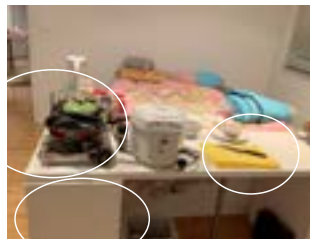
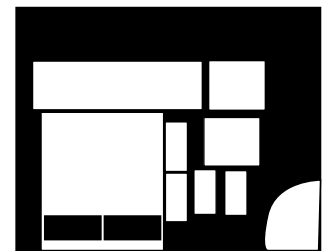
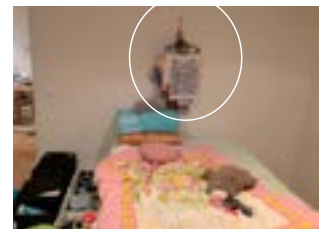


Next, I slowly put in my personal belongings at surrounding. For instance, I put my clothes, shoes, socks, towels and makeup-kit into a bunch of boxes and stacking one to another. During the process of stacking, I adjust a few times on the layout and position of each furniture. The exploration and adjustment request the necessity of those furniture and why am I need that. Also, the dwelling started to change how I use and look at the items. For example, in order to save the space, I hang some of my clothes on the wall by the bed. It sparks the idea that clothes are not necessarily should be put in the static closet. Rather, it could be mobile and stay at the space resident intent.

Ultimately, every object is likely to be mobile and transform to the other interior setting. When one intent to change the traditional setting of furniture in interior, it can be transformed into the other ways. In order to make all functions work in a tiny space, every furniture is just a contemporary adaptation. It is ready to be designed, made and moved. Relocate the personal belongings and all kind of utensils in a room undeniably redefine the meaning of interior in the sense of space.

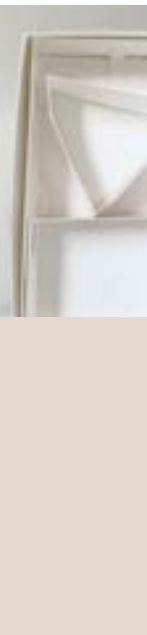
What makes the space transformed?

How the transformation affects the way we live?



Then, the idea of making interior and combining the function together has been inspired and continue as a technique to explore and activate the interior.

This chapter explores the technique sparked through the process of activating interior. By using cubes as the singular elements again, I tried to explore the form of space in different angle. As such, a space is not static but could be performed in different ways. It could be 'contracted' and 'expanded', regardless to the size of physical room, whilst only focus on the space itself. Every corner of space is connected in a unique relativity, making a spatially dense living. When the moment of space changes, space encountered into one another. Thus, space is flexible and the following transformative techniques are subject to change the size of space. Through the process, various folding techniques are inspired and used to expand and contract the space. The aim of the experiment is to study the flexible methods altering space.



MAKING INTERIOR

3.1 SPACE CUBES

As the site is a narrow and tiny environment, the space design has to be modular and adaptable. This exploration is to see how interior adapt and merge to a bigger interior by moving the rooms in various arrangement. Furthermore, some materials used are made by feminine product such as bag of perfume shop, lipstick shop and other cosmetics shops. It leads me to think of customizing a space for woman made of the feminine materials they familiar with. The materials and colour scheme could show the feature of the room and woman could enjoy the space.





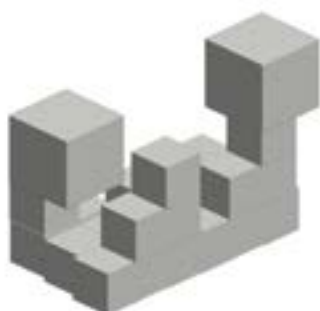
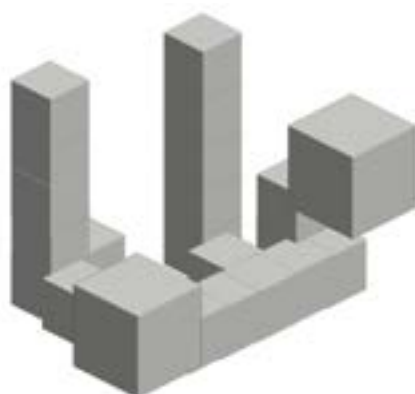
In addition, the arrangement of the cubes explores more possible ways of how multiple residents live together. Every cube could become a living area for a family. From this setting, every space is adjustable and connect every resident together. When one wants to stay with the other, he could just move to the bigger space in the system, while move to a smaller space when he wants to stay alone.

Moreover, looking it as a small-scale project, the space could be functioned as a dressing room. The changing of arrangement could be used to display the client's personal belongings like her watch or perfume. However, if looking from a big scale, it could be a modular interior group. It could be a dwelling space that is flexible to move around the interior rooms. As shown in the figure, although the space is full of storage, there are still some empty spaces exist within the 'fullness'. This is because contrast of the juxtaposition makes a space function differently. Combining two space together brings out various interiority. For example, staying in a spacious corner within a clustered space makes people experience differently from staying in a pure large spacious room. People feel more harmonious, and it is clear that where should they position themselves also where to put their belongings at. When the items are fit in a designed sequence, the space doesn't look messy. Rather, view from the items stacked in the space, people could tell what the function of the space is.

From the idea of using cubes as a way to express the sense of space, I thought it would be more possibilities to study on the change and variety of space made by cubes.

3.2 ACTIVATE THE SPACE

Firstly, I explored the form of space by using the grey cubes. The space expand and contract in different ways. For example, staking the cubes in a row makes the space looks longer while stacking one op top makes the space looks taller. Consequently, same element looks differently from different arrangement. When they are stacked together, the whole space could be tall, wide, long or the contrary way. For example, it looks flat and large when they stack together; It looks compact and tall when they are in a line. Visually, the space looks larger when big cubes are placed in front.



Next, I explored how to merge different function in a space by building the models of cubes in different colours which is red, orange, green, yellow and pink. Each colour is assumed to represent a function or furniture. It comes out with a combination of mix functions, creating a space with various type of utilities.

For instance, imagines the green cubes represent kitchen, red represents table, yellow represents chairs, orange represent bed and pink represent cabinet. When these furniture put together, the space becomes very interesting with no rule and free to transform. The key idea is to test out the possible idea of transformation within a space. By orchestrating the cubes, the space is expanded and contracted as an interior. Imagining the cubes are transformable and transit between several functions, I thought it would be a potential option for the idea to be used in proposal.



3.3 MAKE & FOLD

'Make' means interaction between residents and object make out the space; 'Fold' means the technique of folding activates and transforms in space.

The exploration starts with gluing the cubes together and try to make it physically change through my folding action. Repeating, turning, folding makes the overall configuration of cubes varies. For instance, the image with a base and a backrest is possible to be used as a rack; The shape of a full cube is possible to be used as a table; The image with L-shape could be imagined as a sofa. As such, the cubes which assumed as object in interior transform the function of space by technique of simply turning and folding. By doing these actions, the unity of separation and coherence forms when the object manipulates the space by not separating itself.

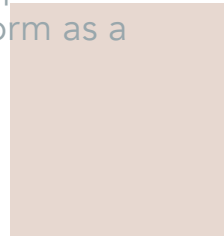


Furthermore, the technique of folding is not limited to 'turning and repeating'. In order to expand the space, 'expanding and contracting' is the other way to study. For instance, I fold a 'long cube' with three cubes together trying to make it physically change through my folding action. The one cube can be considered as one person use and three cubes are for multiple persons to use. This technique helps to save space as well as encourage people to gather in a space. Once a private space could be transformed into a community space, sharing the moments being together, the transformation is then sublimated from multitask space to a space to connect residents together. This process does not only requires 'folding' but also the 'making', which can only be completed through the interaction between object and residents themselves. Thru making, the complete interior then can be formed and transformed to any other setting they want. Thus, for the consideration of proposal, the size and physicality of a furniture is potentially change based on the situation of given space.





Eventually, the structure of space could be more creatively formed through process of 'making' and 'folding'. It shows different gesture of how the object could be fold whether usual or unusual. The outlandish forms in different states shows the potential of being a diversify furniture, which is also different with the usual forms of current furniture. For example, the desk and chairs are actually made up of 'hollow' cubes. As such, the furniture is not solid, every empty space make up emptiness, empty space between the legs of tables, or emptiness of storage space. In contrary, I intend to design a set of furniture where they are all solid and sedate to be used. This idea inspires me to experiment the unusual form as a space in the narrow laneway.

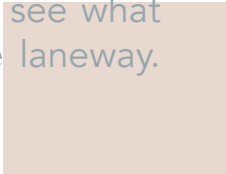


3.4 IN BETWEEN

Playing with placing those diversify cubes in the laneway, I immediately thought of the design of entry and stairs. Entry, being as a function to welcome residents to come home, is relatively important and potentially be performed in a more welcoming way. For example, since the design of dwell is potentially inserted between two buildings and higher from ground, the entry could be a creative and flexible stair. As the cubes seems like a curvy long stairs, the idea of a sliding stair sparked in my mind. The idea unpacks the technique of stacking again but is aiming to transform stairs. Stairs is a connection between two space; It is a connection between two locations with different height. Thus, it is a potential object to be transformed connecting exterior and interior.



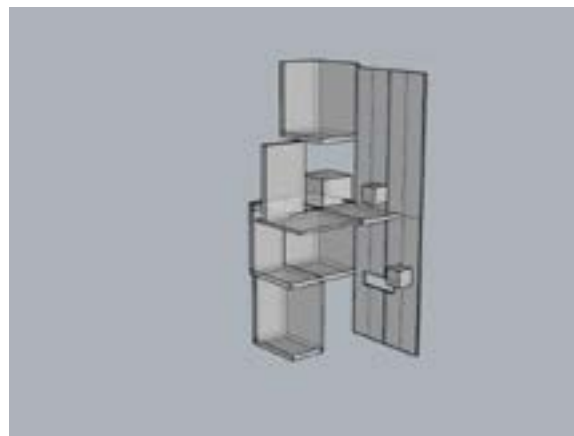
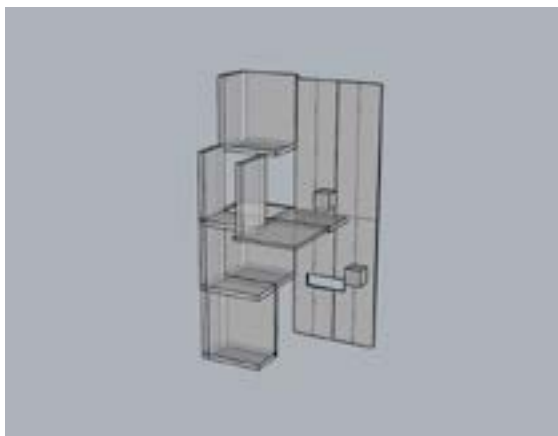
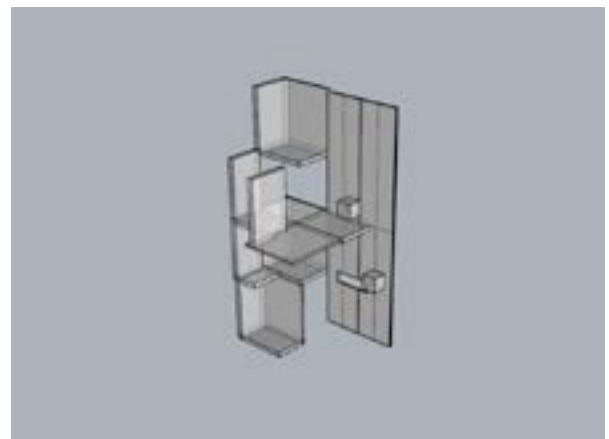
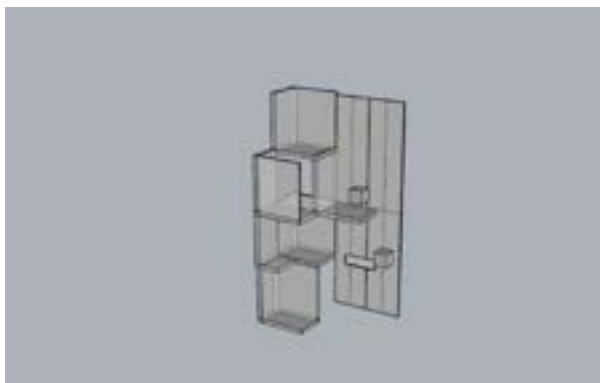
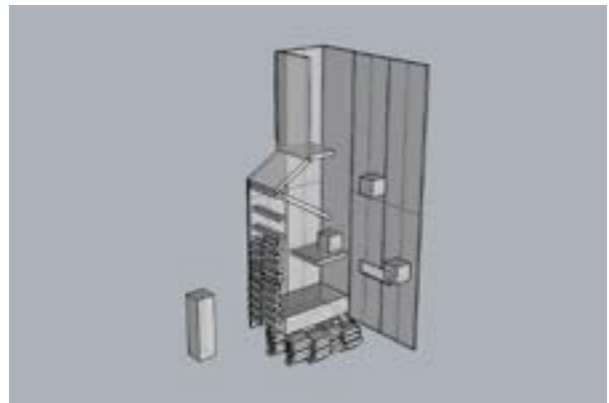
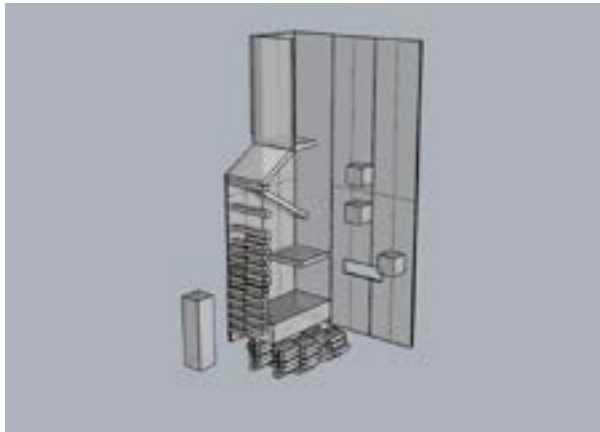
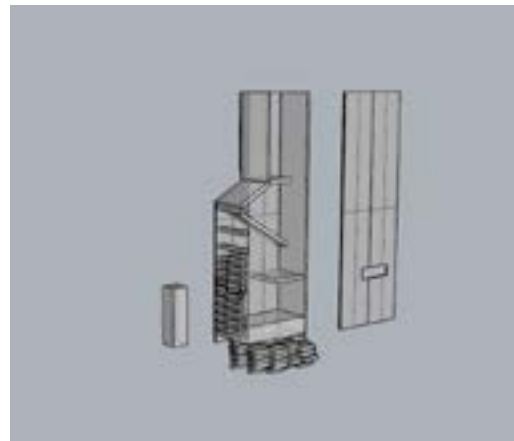
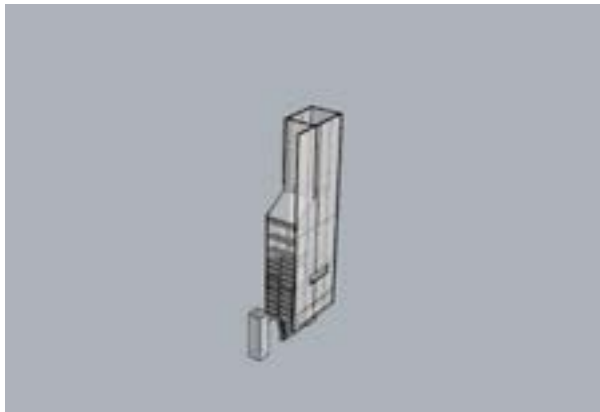
The idea of transformation not only works in interior, but also connecting the exterior and interior. Locating at the narrow environment, I envisioned that the proposal interior design would be built in several layers, and the interactive transformation can be performed within different floors. Then I tried some simple models to see what space could be formed in the laneway.



3.5: Folding Interior

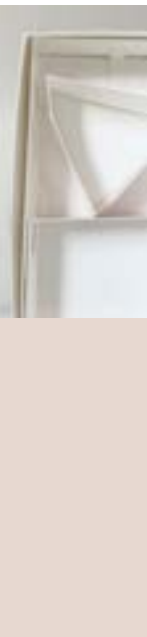
Through the idea of creating a tiny model in the environment, I tried to make a simple model to view on the spatial condition. It could be said as part of the sketch models before going in with the consideration of details.

A and B are two trials to further develop base on the folding and stacking idea. First, enabling the space open and close like a folded box makes the interior shares a moment with exterior when it is opened. This idea focuses on the context of 'sharing' space as residents would have to share the similar wall. It unconsciously connects everybody at different floors to use it. Following is the stacking technique which forms a pile of cubes at side and bottom. The small cubes at the side is mobile so that allowing people at different floors to share. The transition of walls transforms the scale of space and possibly enable residents to transform the intent function.



It inspired me to design a track for my furniture to move on floor and wall in the following proposal design. Concentrating on the 'connection' between space would be the main idea to play with the idea of transformation. The sketch model exploration brings me to the design process in more details thought such as considering the scale, number of residents and the connection between interior.

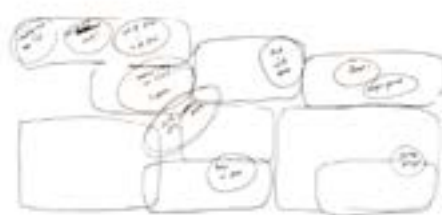
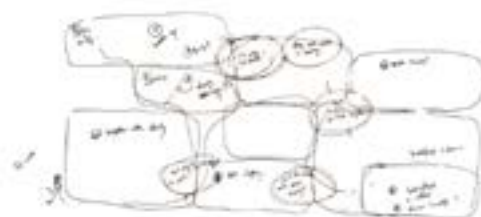
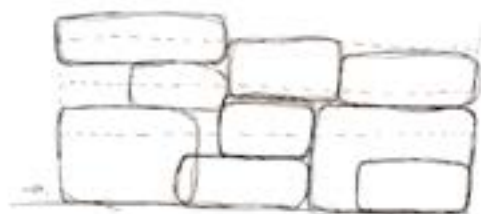
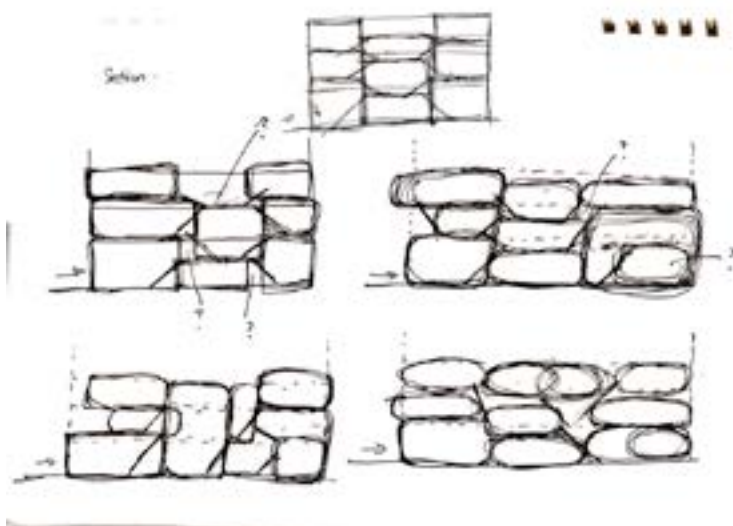
*How can
transformative
techniques affects the
interior structure of
living space?*

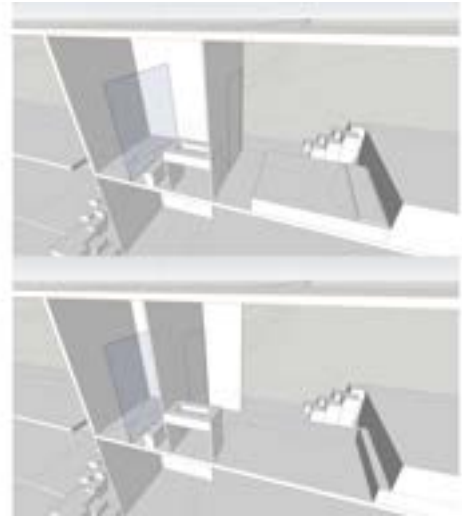
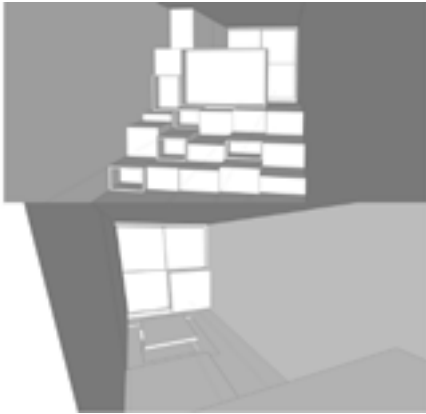


RE-ARRANGE

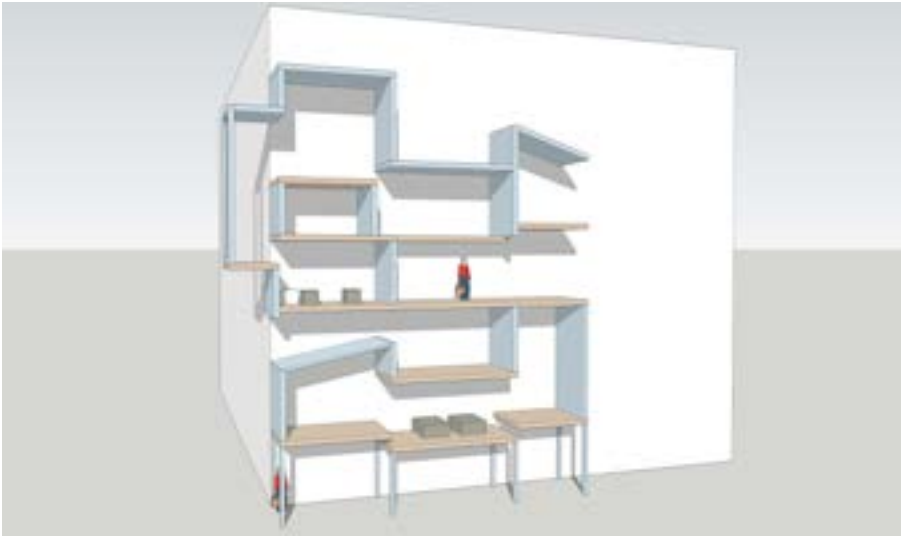
4.1 DESIGN PROCESS

The agenda of the transformation is to connect the residents together, creating an opened interior in the inhabitation. In order to design a transformative dwelling for the residents, I carefully consider the requirement of the three clients, which stated intent to have more shared space connecting them together. Refer to the characteristics of them, I drew some bubble maps making zone function so that to create a highly fluid space. When there are two functional space, in between creates an interior. The interior creates more possibility and chance to create a share space. It makes me to think on the connection and how could the transformation happen here to engage with the space. The circulation could show the connection between the structure, interior and exterior.



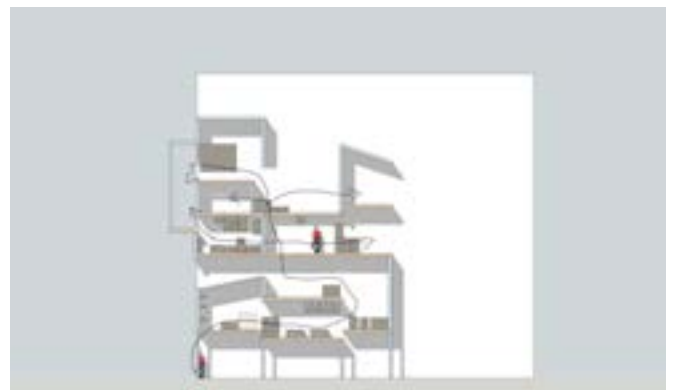


Designing a rough interior, I began the ideas of cubic structural interior, also make them stacking together to function differently. As a design of bedroom, these cubic structures attract residents to interact with the interior and make their own space. Next, the movable wall complies the idea to expand the space usage. It maybe a bedroom one person before the wall moved, and turn into a bedroom for two person to use after the wall is moved. The transformation encourage the residents to stay in a space and alter the space when they need.




As an initial idea of the design, the interior allows the openness and connection is everywhere. Whenever residents intend to use the space, the openness access them to use the other room. Various floor plates create different floor levels and interesting to meet each other in different rooms. Using stacking as a form of furniture, I think cubic furniture allows more possibilities on how residents could play with them. The initial idea is to use stacking and hiding as a system of form and space, allowing everything moveable and flexible.



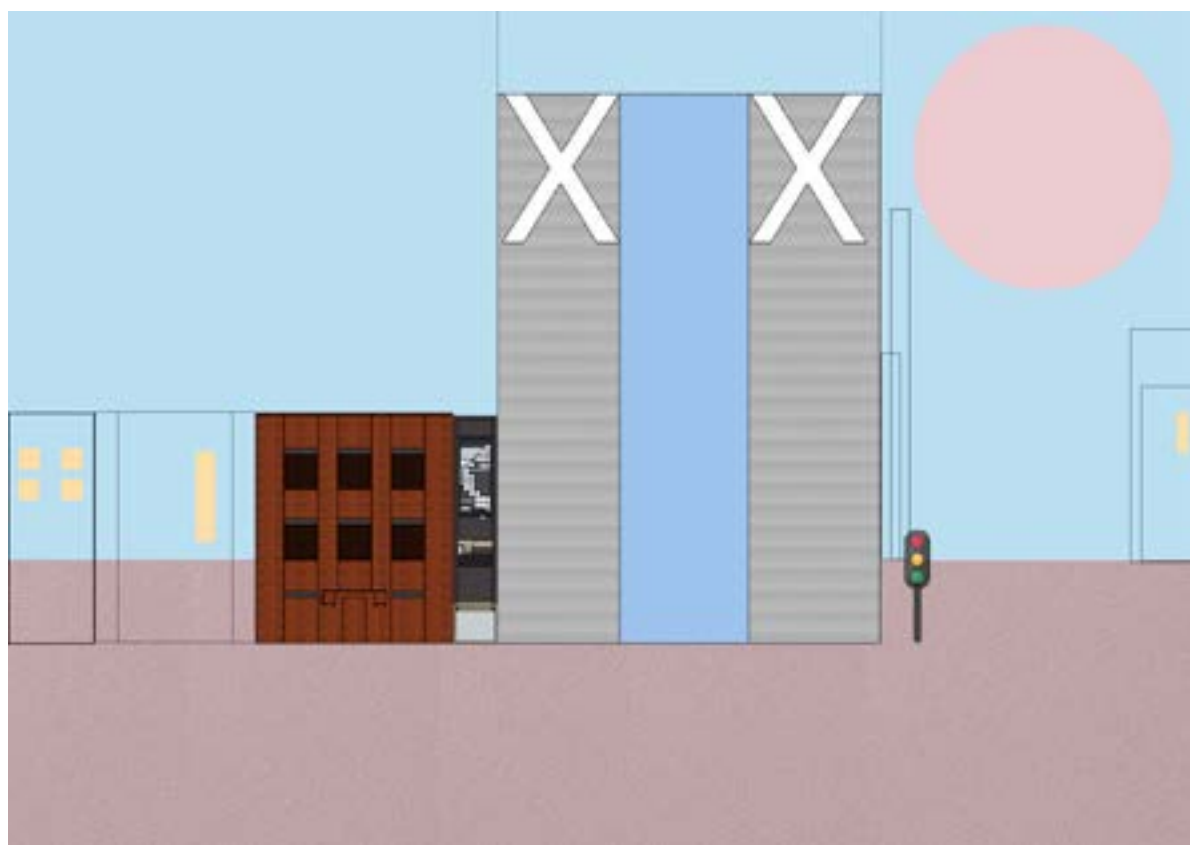
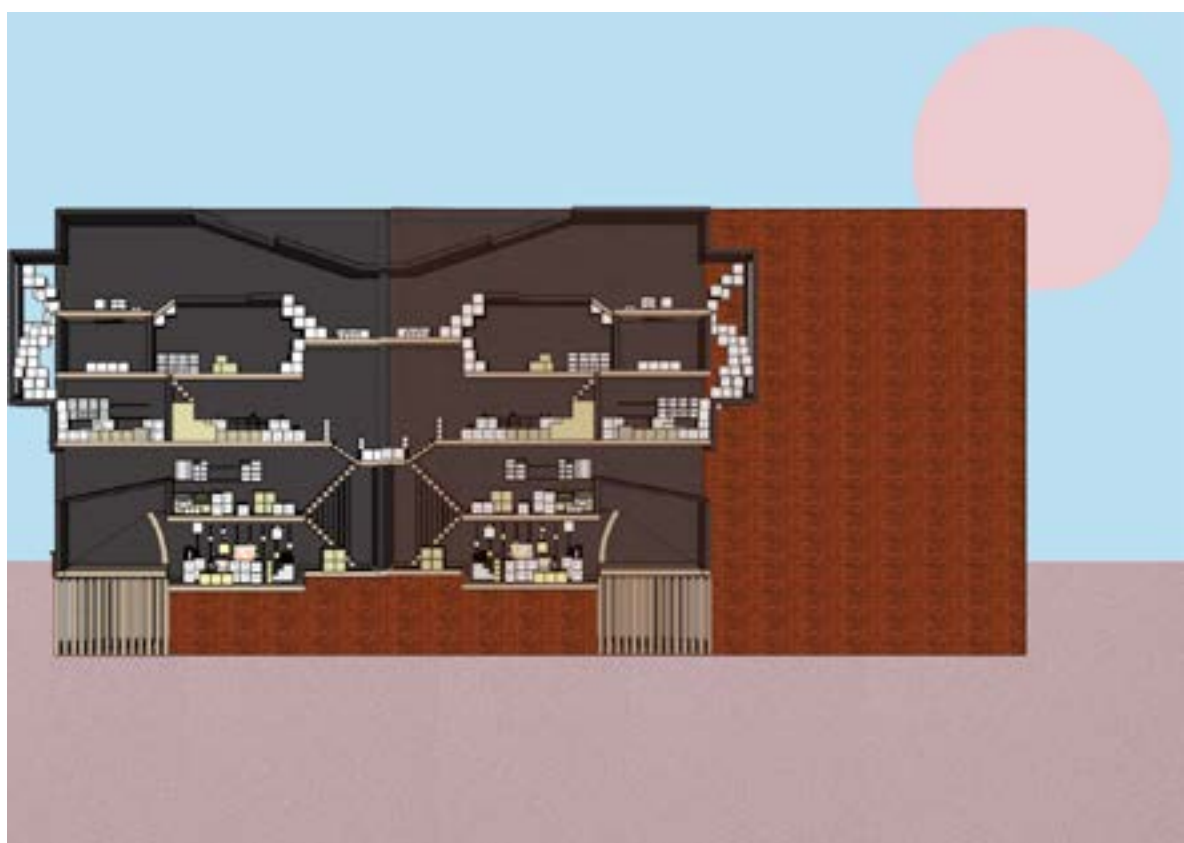


Eventually, the cubic furniture has been developed more to ensure the mobility and fill the space with richness and fullness in research proposal.

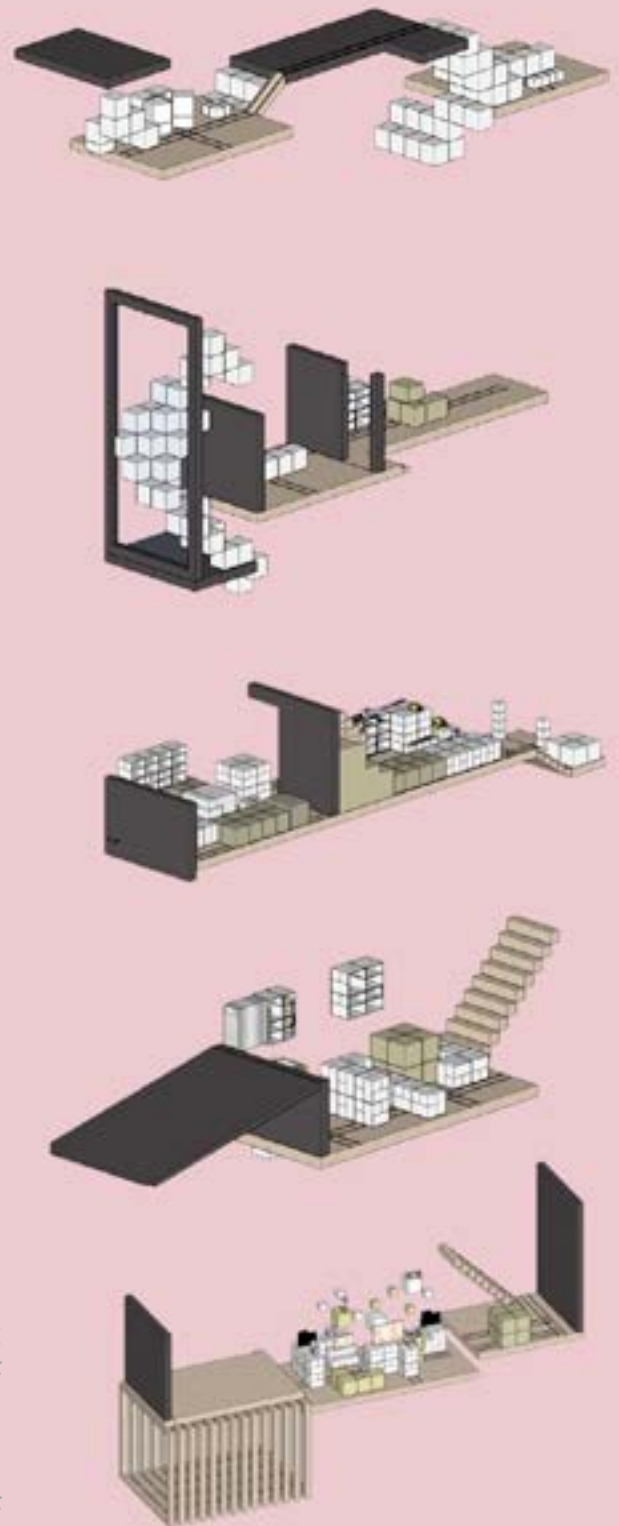
4.2 RESEARCH PROPOSAL

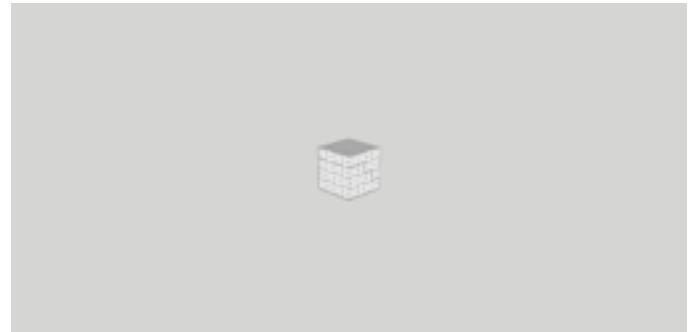
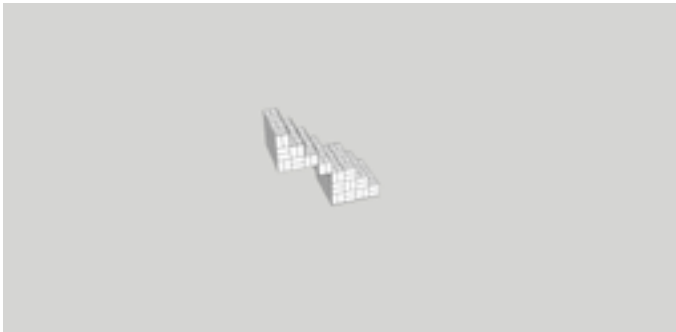


Re-Arrange is a project planning of a living space for potentially two families of residents by mirroring the structure on the other side. It allows the connection between the residents, the alleys and pedestrian. The design is inserted between two buildings and build up 2m off the road. the design allows pedestrian to access the laneway, encouraging the pedestrian to be activate the location when they pass the street. It could connects the dweller, the site and the pedestrian together.



Moreover, the interior allows openness of space and enhance flexibility to move interior objects around. For instance, to design an open experience between interior and exterior, various rooms have been designed to incorporate with the outdoor sunlight and connect both environments together. When one intend to have some workout activity, he can use the room expose to sunlight but when others intend to share the space, they can make it as a communal space to work out together. The transformation prevent left of anyone while attracting residents to share the space. In order to increase openness of space collectively, the interior is lack of walls so they can consider the space to be used as single person or multi-person space when they orchestra the furniture. The arrangement by residents decides the number of people to use the space.

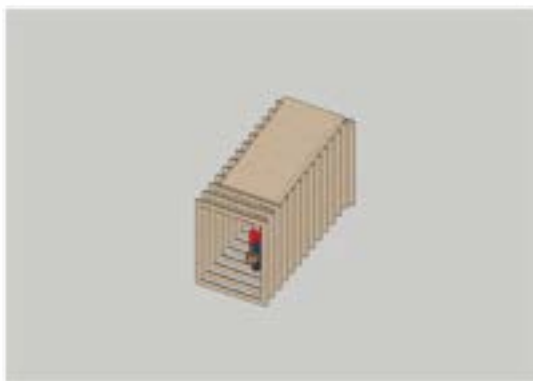




STAIR 1 FOLDING



STAIR 2 REPETITION OF STACKING



STAIR 3 REPETITION OF STACKING FORMS LANEWAY

Furthermore, the circulation of interior allows the use of stairs so that residents experience the process of transitioning within different floor layers. For example, there are three types of stairs to ensure the fluidity of the whole structure. Three of them have used the past exploration techniques which are repetition, folding, stacking, and sliding. The transformation of stairs increase the creativity and possibility of how residents intend to use the space. When it is used, the space is connected and a passage is formed; When it is not used (which means it is hided or moved), the space could be used in another form. Thus, stair plays a vital role in a transformative inhabitation.



DISPLAY ARTWORK



TABLE OF DECORATION



CUBIC SEAT

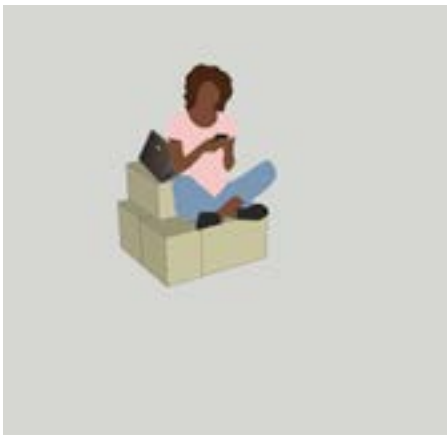


TABLE + SEAT



CABINET



TEA TABLE

By arranging cubes of furniture, residents function with them differently. Using my past explored techniques which is folding, pack & unpacking and stacking, residents are able to activate the transformation of interior. A cube can be transformed into a tea table, artwork rack, seat and cabinet in anywhere. This forms a system of furniture in the dwelling, as well as it is mobile by using the linear motion track. With the action of pushing / pulling the cubes, the interior space can be transformed into various function. For example, the space is able to be transformed from a bedroom to a study room by simply moving the cubes to become table chairs set or a bed and cabinet set. It creates a new sense of space in volume and creativity. Residents discover, rather than being prescribed, various form of functionalities in the house. In addition, these spaces are allowed to transform from one-person room to multi-person room by extending the use of furniture. It indeed encourage residents to share a space together and take place any activity. When one calls the other, he can walk from the floor plates onto another, this is how the structure encourage residents to be distributed across all house.

B. TRANSFORMATION OF BEDROOM / STUDY ROOM



C. TRANSFORMATION OF KITCHEN / DINING AREA / BAR



D. TRANSFORMATION OF AN EXTERIOR / PLAYROOM / GARDEN



E. TRANSFORMATION ART DISPLAY STUDIO / LIVING ROOM



The cubes incorporate the space of two different floors in order to extend the spatial experience. Potentially built as a communal reading room, it is the richness of moment encountered when two people meet in the space coincidentally.

A. READING ROOM



BIBLIOGRAPHY

Arent, Juliette, 2005, Takadanobaba: Entire found objects of artists' residency in Tokyo, Artbank, <http://artbank.gov.au/video-vault/juliette-arent/> (annotate)

In this interview, interior designer Arent discusses Takadanobaba (2005), an artwork created by artist Claire Healy and Sean Cordeiro. Healy and Cordeiro are Australian artists who claim to transform the vacant structure to an installation that intersects with home, design, society and obsolescence. The artwork allows viewers to think about the relationship between storing physical objects and data accumulation at home,

The artwork is originated at a residence in Takadanobaba. The artists piled up all furniture in the residence with a designated order. Using techniques of stacking, pack and unpacking, they transformed these furniture which originally treated as storage and junk into an incongruent installation. They packed different materiality of objects in a particular way so that to maximise every single useable corner and space. I am engaged with the idea of creating a sculpture with the everyday things we use in living space. It helps me to focus on my research rethinking the position of objects surround me and what is another arrangement to place them. While using the repetitive techniques in the artwork, the space is multiplied, and the process could be highlighted as a documentation of 'making' interior.

Mina, Andrea. Intimate Immensity, an Interior Architecture, 2009. (annotate)

Intimate Immensity is a series of artwork by Andrea Mina finding the meaning of tiny world. The architect tried to make a tiny nostalgic world with compact structure. This research essay states that the intimacy between space and structure is related to how they connect together. By hand making the mini artefacts, she generates a compressed interior with careful consideration of how the space structured.

Mina states that people is desperate to make things smaller. People transform every object to a smaller size through space exploration. It inspires her to handmake the thirty-six palm size miniature made of different material such as balsa wood, cat hair and sea shell. She connects the interior with a continuous layer of pva glue or by using transparent nail polish. Using the glue, he makes several tiny points within the void and connects them with structural triangulation and relatively stable system.

I am engaged with the notion of creating a tiny interior because tiny world supports compact living system. It helps me to focus on how to structure the space or living system in more structural details. The materials used and the structure made by Mina encourage me to be more imaginative while designing gesture of object.

Moortgat, Ingrid and Pombo, Fatima, 2017, "Furniture and Function. Donald Judd vs Muller Van Severen about designing furniture", DOI: 10.17151/kepes.2017.14.15.8 (annotate)

This article proposed the different definition on furniture design. It compares two contemporary designers, Judd and the other two artists who formed a studio named Muller Van Severan. They are both strong minimalist artist which have the same minimalism aesthetical view. However, they hold different ideas on 'furniture design'.

Judd insisted that furniture should be a functional design but art is not. He always design a furniture for a practical reason, but his minimalist art piece does not have a meaning, it exists as a whole and its relation to environment is important. On the other hand, Muller insisted that furniture is not only design, it could be an art piece or sculpture when it is not in used. Muller always fill the space with furniture playfully and poetically. They are romantic implications to space, they do not function, and do not belong to any practical sense of experience.

This article compares two different views on how to engage with the environment of a home. It helps me to think of the creative ways to arrange and compose object at an interior. My research focuses on the idea of creating a space with relation to the scale and arrangement of objects, the article aids me to view old furniture not as a junk but a possible art piece. I start to think of the meaning of every arrangement with relation to space and how to design interior playfully.

Norman, Donald, 1989. "The Design of Everyday Things". Broadway, New York: Doubleday. (annotate)

The book states the idea of how everyday objects work in order to improve the quality of people's life. It states the pros and cons of a several designed object, also the good and bad effects of how an object performs.

The author says that the everyday things present diversely to people whether it is easy or hard to use. However, as time goes by, some design is neither improving the daily effectiveness nor user experience. They focus on the aesthetic and elegance of the design itself more than functionality. For instance, the design of a pull or push door should be indicated on the design of door handle, but an 'elegant' door often does not have a handle. Therefore, a newcomer would need to spend time thinking which way to open the door. As a result, we as human are not controlling the object. Inversely, we have been controlled.

The book inspired me to reconsider the relationship between objects and people. In my opinion, instead of saying we have been controlled, the object is actually 'attracting' people to activate it. My research is engaged with adaptive and transformative system as a way of understanding the notion of 'activating' interior. Some examples stated in the book aids me to think of designing creative form attracting attention of people to interact with the object.

Zittel, Andrea. 2003, "A-Z Cellular Compartment", Zittel.org. 2020, <http://zittel.org/works>

This artwork is created by Andrea Zittel. She is an artist developing functional objects and experimental living. As a continuing idea and artwork, this compartment is designed as a single standard size apartment which subdivided into 10 chambers. Each chamber has a clear sense of specific function.

The compartments are social and practical. Every chamber is connected to each other, yet they are not similar.. Using the stacking system, every chamber is ready to be shifted to other place. Living in such compartment, people feels compact but practical. It is easy to split a man's space into public and private. It makes he feels comfortable to put his life into specific order. Im interested in the idea of creating a transformable living system, it makes people's life become more convenient. Besides, it encourages people to think of how they want to live, and how they want space be. While mobilising the living chamber, people interacts with space itself. The technique used in the system are stacking and shifting. These methods are significant to my research which is engaged with the idea of how to change the hierarchal structure of a space by process-based technique. The arrangement of the compartments creates various kind of forms in the sense of interior.

Annunziato, Lisa. "A Japanese Shell: A Cultural Melange of Style, Malatesa Designed by Koko Architecture Design Has Brought to Life the Concept of the Ethnic Minimalism. (Design).(Brief Article)." Contract 44, no. 7 (2002): 64.

Bingham-Hall, John, and Kaasa, Adam, 2017, "Making cultural infrastructure: can we design the conditions for culture?", Theatrum Mundi CIO, Somerset House, London

Fortin, Cary Telandar, Author, and Quilici, Kyle Louise. New Minimalism: Decluttering and Design for Sustainable, Intentional Living. Seattle: Sasquatch Books, 2018.

Mitchell, Ryan. Tiny House Living : Ideas for Building and Living Well in Less than 400 Square Feet. First ed. Iola: F W Media, 2014.

Healy, Claire & Cordeiro, Sean. 2011. Future Remnant. Sydney: Museum of Contemporary Art Australia.

Healy, Claire & Cordeiro, Sean. 2004. Deceased Estate. Sydney: Museum of Contemporary Art Australia.

Healy, Claire & Cordeiro, Sean. 2006. Hamper. Sydney: Museum of Contemporary Art Australia.

Healy, Claire & Cordeiro, Sean. 2008. Sameday Service or Sooner. Sydney: Museum of Contemporary Art Australia.

Judd, Donald, 1956, Specific Object, Art Yearbook.

Wotton, Joshua, Henry, Skates, and Leigh Shutter. "Tiny House - When Size Matters." Australian Planner 55, no. 3-4 (2018): 209-20.

Zittel, Andrea. 1993, "Purity", Andrea Rosen Gallery, New York

Internet Source

"ALTS Design Office Optimizes the Storage Space in a Family House in Japan." designboom, July 26, 2018. <https://www.designboom.com/architecture/alts-design-office-optimizes-storage-space-family-house-japan-07-19-2018/>.

"Claire Healy and Sean Cordeiro: The Ugly Stick Orchestra at Roslyn Oxley9 Gallery, Sydney." GalleriesNow.net. Roslyn Oxley9 Gallery, May 18, 2017. <https://www.galleriesnow.net/shows/claire-healy-and-sean-cordeiro-the-ugly-stick-orchestra/>.

Davis, Anna. "Claire Healy & Sean Cordeiro: Stories & Ideas: MCA Australia." Australias home for contemporary art, October 3, 2012. <https://www.mca.com.au/stories-and-ideas/claire-healy-sean-cordeiro-curatorial-essay/>.

Drawer House. Tokyo, Japan: Nendo Studio, 2003.

Frearson, Amy. "Micro Compact Home 016 by Richard Horden." Dezeen, June 28, 2013. <https://www.dezeen.com/2012/06/19/micro-compact-home-016-by-richard-horden/>.

Israel, Matthew. "On the Importance of Donald Judd." Artsy. January 17, 2015. <https://www.artsy.net/article/matthew-on-the-importance-of-donald-judd>.

"KENCHIKUKAGU FOLDABLE ROOMS: BY TOSHIHIKO SUZUKI." Jebiga Design & Lifestyle. Jebiga Design & Lifestyle. Accessed April 15, 2020. <https://www.jebiga.com/kenchikukagu-foldable-rooms-toshihiko-suzuki/>.

Zittel, Andrea. 2004, "Wagon Station", Zittel.org. 2020, <http://zittel.org/works>

Video / Interview

Suzuki, Toshihiko, 2012, "Trendspotting, Toshihiko Suzuki, Atelier OPA.avi", Kenchikukagu, <https://youtu.be/nVVt87DhN6U>

Zittel, Andrea, 2015, "Wagon Station Emcampment", Art 21, <https://art21.org/watch/extended-play/andrea-zittel-wagon-station-encampment-short/>

Kanopy. 2014, "The Artist's Studio: Donald Judd. San Francisco, California, USA]: Kanopy Streaming"